



# PTM 160

5,5PK BENZINEMOTOR MET HORIZONTALE AS

# PTM 160

CE

EU2

ACHTERKANT



ONDERKANT



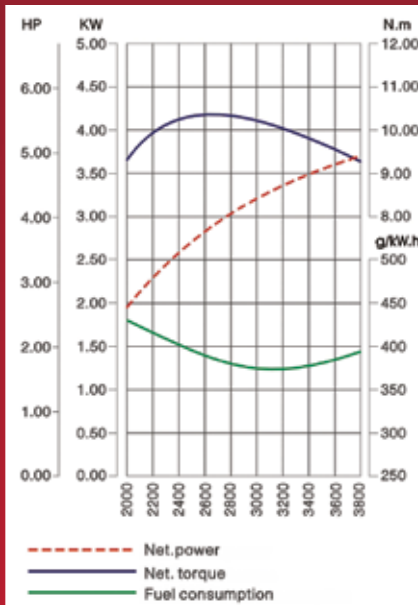
LINKERKANT



RECHTERKANT



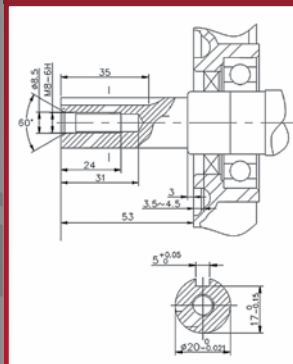
## PRESTATIE CURVE



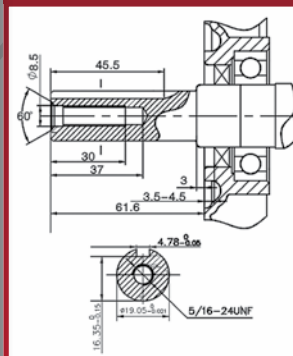
## TECHNISCHE SPECIFICATIES

Motor type	1 Cilinder, 4-takt, OHV, geforceerde luchtcooling
Max. vermogen	5,5PK(4,0kW)/3600rpm
Net. Koppel	10,3Nm/2500rpm
Compressie ratio	8,5 : 1
Boring x Slag	68 x 45 mm
Cilinderinhoud	163 cm <sup>3</sup>
Draairichting	Linksom (tegen de klok in)
Ontsteking	TCI
Tankinhoud	3,6 liter
Drooggewicht	14 kg
Motorolie capaciteit	0,6 liter
Afmetingen(LxBxH)	376 x 312 x 335 mm
Startsysteem	Recoil (E-start optioneel)
Geluid	70 dBA
Stationair toerental	1450 rpm (±150rpm)

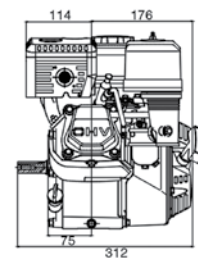
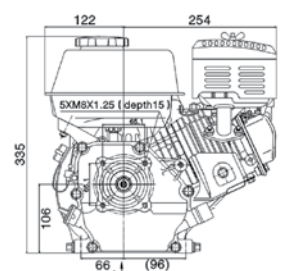
## 20 MM AS



## 19,05 MM AS



## MOTOR



A View

